



Let **UK** Home

2 Bedrooms

Flat

Located in London

£4,000 Per Month



info@letukhome.co.uk

<https://www.letukhome.co.uk/>

01795 358 886



23 Gauging Square London

E1W 2AW



Let UK Home present this stunning 2 bedroom property in London Dock.

This property comprises a large bright open plan kitchen and living room with great views, two double bedrooms with wardrobes (master en-suite), a large family sized bathroom and ample storage.

Residents of this exceptional development will have exclusive use of the spa, indoor swimming pool, sauna, steam room, squash room, virtual golf suite, cinema, gymnasium and treatment room. Furthermore, residents will also benefit from a concierge and an unrivalled selection of shops, bars, restaurants, leisure facilities and beautiful landscaped courtyards.

The apartment is located near the riverside, surrounded by beautiful landscaped squares and boulevards, close to City of London and St Katharine Docks. The world-famous Tower Bridge is within walking distance. Gauging Square is the center of the entire community, lined with restaurants, cafes and bars. The supermarket-Sainsbury's brings ease and convenience to residents' daily life.

23 Gauging Square London

£4,000 Per Month

- 10th Floor
- 24h Security
- The Gym
- Sauna & Steam Room

- Concierge Service
- Swimming Pool
- Cinema & Game Room
- EPC Rating: B





Let **UK** Home

3F 2 Eastbourne Terrace
 Paddington
 London
 W2 6LG

01795 358 886

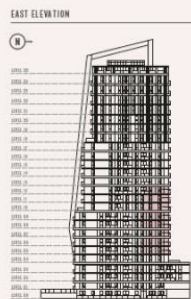
info@letukhome.co.uk

TWO BEDROOM

| TOTAL AREA | 88 M ² | 950 SQ FT |
|----------------------|-------------------|---------------|
| KITCHEN | 3.27m x 2.40m | 10'0" x 8'1" |
| LIVING / DINING ROOM | 7.32m x 4.20m | 24'0" x 14'0" |
| BEDROOM 1 | 3.25m x 2.74m | 10'7" x 9'0" |
| BEDROOM 2 | 3.31m x 3.04m | 10'9" x 9'10" |
| BALCONY | 10 M ² | 108 SQ FT |

CASHMERE WHARF

LONDON DOCK



KEY

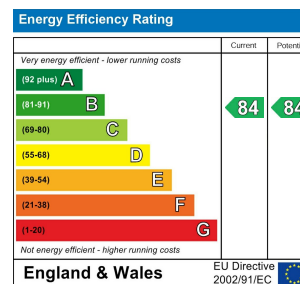
| | | | |
|---|---|--|---|
| Measurement Points | Floor over-seek unit | Oil boiler unit (over vented appliance) | Film/Double Window sensor panel |
| Gas boiler unit (over vented) | Cupboard | Hot water tank (over vented) | Fridge/Freezer sensor panel |
| Gas boiler unit (over vented) with Radiator Control Valve | Window | Hot water tank (over vented) with Radiator Control Valve | Fridge/Freezer sensor panel with Radiator Control Valve |
| | TV panel with double panel control of high level and additional outside of the land | | Tinted film |

For further details on the construction and layout of the property, please refer to the architectural drawings. All measurements are approximate and are for general guidance purposes only. The measurements are intended to be used as a guide only and should not be relied upon for legal purposes. The measurements are intended to be used as a guide only and should not be relied upon for legal purposes. The measurements are intended to be used as a guide only and should not be relied upon for legal purposes.

Council Tax Band: G

Local Authority:

Agents Note: Whilst every care has been taken to prepare these particulars, they are for guidance purposes only. All measurements are approximate and are for general guidance purposes only and whilst every care has been taken to ensure their accuracy, they should not be relied upon and potential buyers/tenants are advised to recheck the measurements.



<https://www.letukhome.co.uk/>